

Avoiding slips, trips and broken hips



Falls on stairs in the home involving older people



STATISTICS

CONTENTS

Page

1.	Deaths	1
2.	Non-fatal falls	3
3.	Where falls happen	4
4.	Why falls happen	5
5.	When falls happen	6
6.	Regional information	6
Table 1:	Falls on stairs or steps in the home – 1996 to 1998	7
Table 2:	Falls on stairs or steps in the home – 1996 to 1998 – per million people in age band per year	7
Table 3:	Location of non-fatal falls on stairs or steps in the home – 1996 to 1998	7
Table 4:	Falls in the home – deaths and non-fatal injuries involving the over-65s – totals from 1996 to 1998 – by county or country	8
Table 5:	Falls on stairs or steps in the home – deaths and non-fatal injuries involving the over-65s – totals from 1996 to 1998 – by district	9

FALLS ON STAIRS IN THE HOME INVOLVING OLDER PEOPLE

Each year there are about 2.7 million accidents in the home which result in a visit to hospital. Of these accidents almost 4000 are fatal. Falls are by far the biggest cause of these accidents, 3000 every day, and of these five or six are fatal. A third of all falls, 1000 a day, and three-quarters of the deaths, three or four every day, happen as a result of falls on stairs or steps.

1. Deaths

Most of the deaths from falls on stairs or steps involve the older age groups. Detailed figures are shown in Table 1. Figure 1 shows that 90 per cent of the victims are aged over 40 and 65 per cent of them are over 64. Two or three people over the age of 65 die each day as the result of a fall, at home, on stairs or steps.*

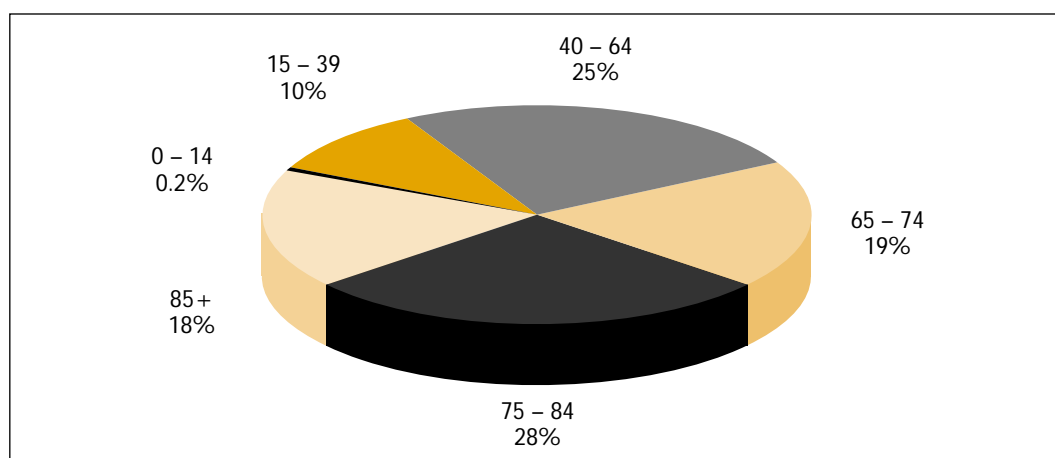


FIGURE 1 Deaths from falls on stairs or steps in the home, by age band – 1996 to 1998

* This report was prepared by Metra Martech Limited. Figures relating to deaths are based on data supplied by the Office for National Statistics (ONS) for England and Wales, the National Health Service in Scotland for Scotland and the General Register Office in Belfast for Northern Ireland. Figures for non-fatal accidents are based on data supplied by the Consumer Affairs Directorate of the Department of Trade and Industry (DTI). The DTI data were supplied from their Home Accidents Surveillance System (HASS), a database which contains details of a representative sample of cases across the UK where the victim visits a hospital accident and emergency department as the result of an accident at home.

For both fatal and non-fatal accidents the figures have been adjusted to take account of the fact that, in a proportion of cases, the type of fall is not specified.

Non-fatal accidents are classified as 'very serious' if the victim is admitted to hospital for more than three days. Accidents are classified as 'serious' if the victim is admitted to hospital for between one and three days, if a bone is fractured, if the victim is unconscious for an hour or more, if there is a serious cut or laceration or if there is a haemorrhage of an artery or vein. Other accidents are classified as 'minor'.

All figures relate to the whole of the UK and include falls on stairs or steps, including doorsteps and stepladders, but they do not include falls from ladders.

Figure 2 shows that up to the age of 64 the number of deaths of men is double that of women, between 65 and 84 the numbers are very similar but over that age more women than men die from a fall. The higher proportion of women among the older victims arises in part because they form an increasing proportion of the population.

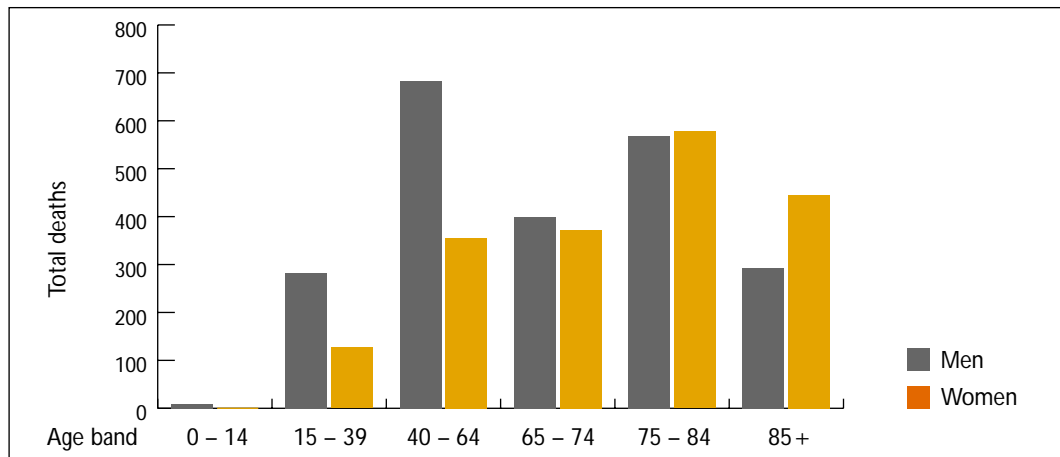


FIGURE 2 Falls on stairs or steps in the home – 1996 to 1998 – total deaths by age

Table 2 shows the accident rates for men and women. It will be seen from Figure 3 that these increase with age, particularly after the age of 65, and that the rate for men is substantially higher than that for women at all ages. Among those over 85, 50 per cent more women than men die as a result of falls on stairs or steps. However, there are about three times as many women as there are men in this age band so that the rate of death for men is substantially higher than for women.

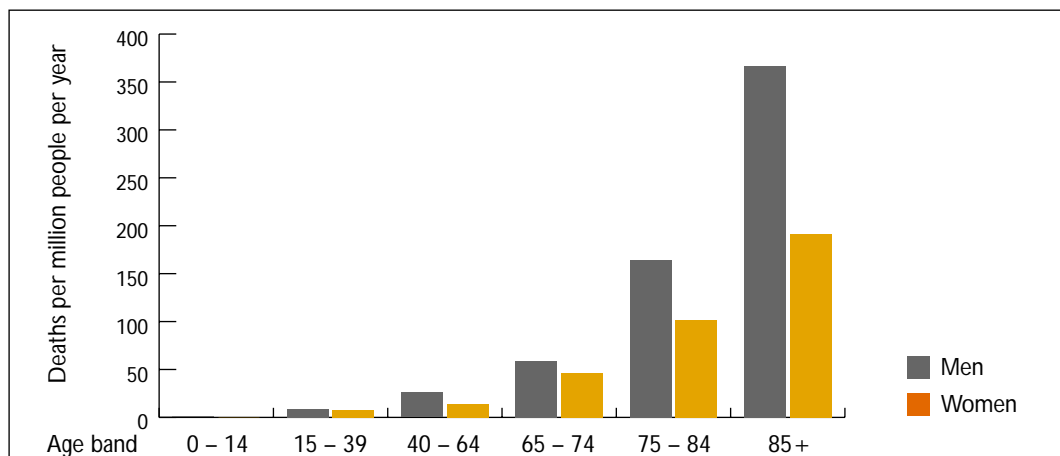


FIGURE 3 Falls on stairs or steps in the home – 1996 to 1998 – deaths per year , per million men or women in age band

2. Non-fatal falls

The pattern is very different for non-fatal falls on stairs or steps. Over 80 per cent of these accidents are minor. However, nearly 20,000 accidents each year are very serious* resulting in a stay in hospital of more than three days. People are much more at risk as they get older and almost 90 per cent of the very serious injuries involve those over 40 whilst two-thirds involve those over 65. Figure 4 shows the numbers of very serious accidents in each age band and there are more details in Tables 1 and 2.

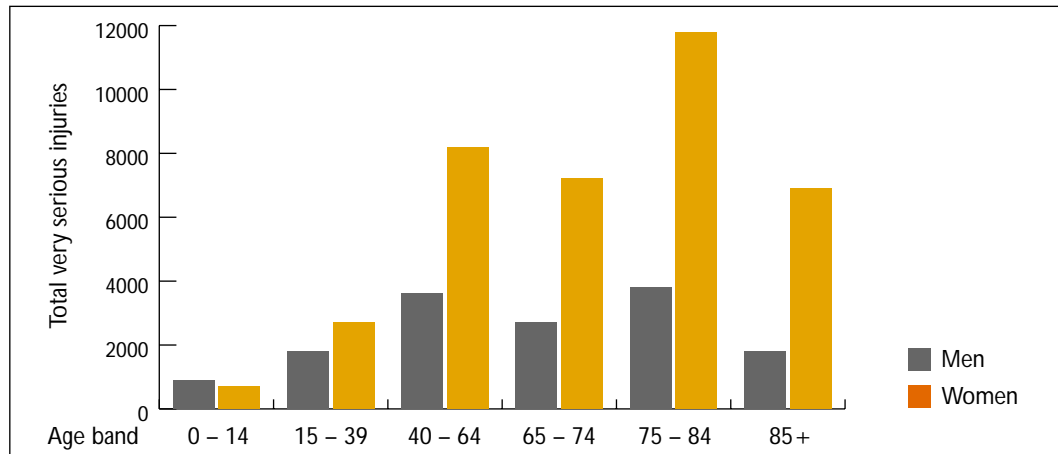


FIGURE 4 Very serious falls on stairs or steps in the home – 1996 to 1998

Figure 5 shows how accident rates increase with age for the very serious injuries. Up to the age of 65 the risk is small but then increases dramatically. Accident rates for women are consistently higher than for men.

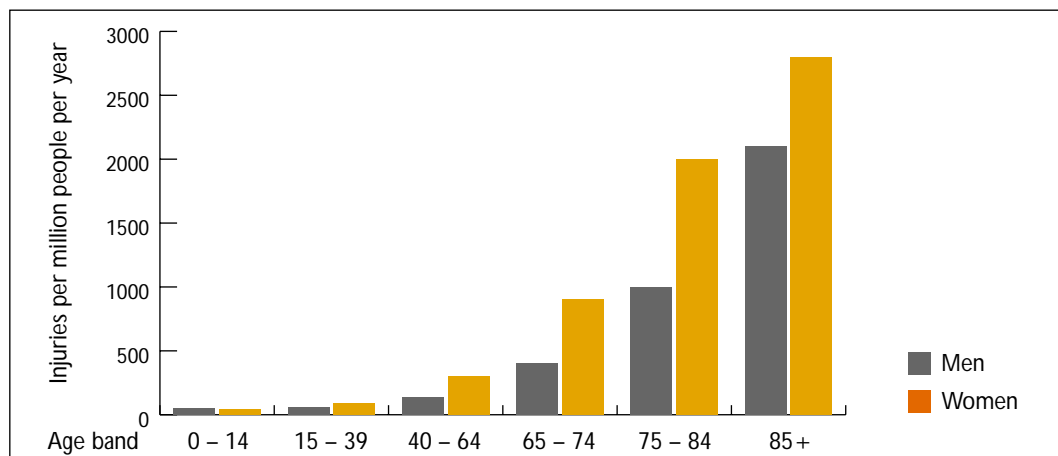


FIGURE 5 Accident rates for very serious, non-fatal falls on stairs or steps in the home – 1996 to 1998

* See footnote to page 1 for definition of very serious accidents.

3. Where falls happen

Accident rates for falls on stairs or steps increase as people get older but because the number of people in each age band decreases the actual number of falls declines. See the table below.

Falls on stairs or steps and the over-65s – accidents per year

Age band	65 – 74		75 – 84		85+		Total	
Deaths	257		382		246		885	
Non-fatal accidents								
Very serious	3,300	14%	5,200	23%	2,900	34%	11,400	21%
Serious	4,500	18%	3,600	16%	1,100	13%	9,200	16%
Minor	16,600	68%	13,500	61%	4,600	53%	34,700	63%
Total non-fatal	24,400	100%	22,300	100%	8,600	100%	55,300	100%

Source: Metra Martech

There are between two and three deaths each day as well as 30 very serious injuries and almost as many serious ones. Although the number of accidents declines with increasing age the proportion that are very serious increases substantially, and for the over-85s nearly half involve admission to hospital or a significant fracture.

The Department of Trade and Industry's HASS database includes a brief description of where and when the non-fatal accidents happen. Analysis of the information shows that accidents happen when the victim trips or falls:

- on a staircase;
- over the doorstep leaving or entering the house – these accidents frequently involve the weather bar;*
- over other interior steps, usually a flight of two or three steps between adjacent rooms;
- on outside steps either in the garden or leading up to the front door;
- from a stepladder while cleaning windows etc.

Table 3 shows the relative importance of each type of accident. Figure 6 shows that over 60 per cent of the accidents occur on a staircase. These accidents tend to be more serious as victims get older. Accidents on interior steps account for 17 per cent of injuries and are less serious. Outside steps are involved in 13 per cent of cases and doorsteps in a further 7 per cent.

* The raised bar on the doorstep or threshold which prevents water blowing in under an outside door.

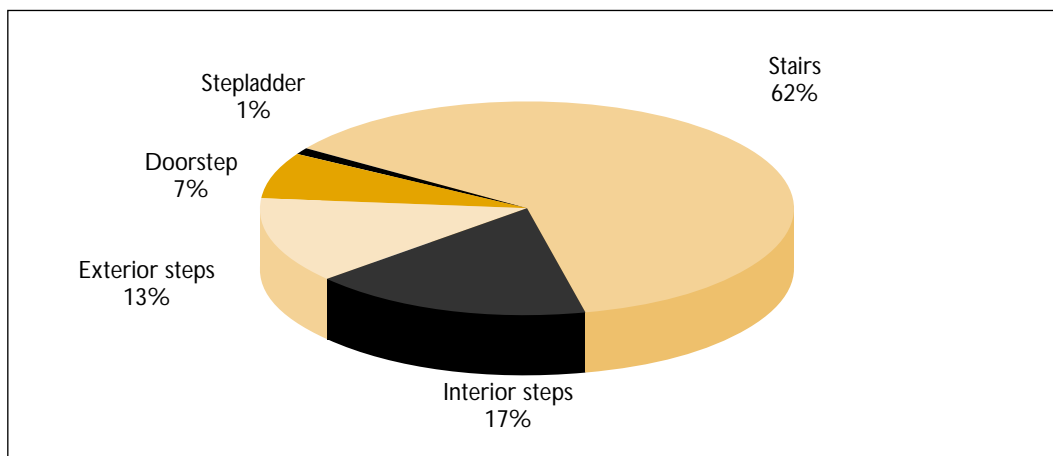


FIGURE 6 Where non-fatal falls happen on stairs and steps in the home – 1996 to 1998

The ONS data do not allow a similar analysis for fatalities but there is likely to be a similar pattern, though perhaps with a higher proportion of accidents on staircases and a lower one on doorsteps. Although staircase accidents are clearly the most important, the other types of accidents contribute significantly to the total.

4. Why falls happen

Other factors are mentioned in the HASS database in connection with some falls on stairs or steps. Although the information is incomplete it does give an indication of some of the more important factors that contribute to falls. The most important ones are given below together with the percentage of times each factor is mentioned as a proportion of all the factors identified:

- Many people fall at the last step thinking they are already at the bottom of the stairs. This is sometimes due to poor lighting, impaired eyesight or because the victim is carrying something. (21%)
- Accidents happen in other people's houses (for example when the victims are visiting their children) where surroundings are unfamiliar. (12%)
- Carrying something is frequently a contributory factor, particularly on stairs. (11%)
- Slippers are often loose and lead to a trip or stumble and then a fall. (9%)
- Alcohol is recorded as contributing to 6 per cent of the falls on stairs and steps. It is likely that it contributes to a substantially higher proportion where the fact is not mentioned.
- Falls happen when victims are visiting the toilet. This may be because they are in a hurry and are suddenly on the move after a period of inactivity or are drowsy during the night. (6%)
- People trip over all sorts of things including children and pets. (5%)
- Poor lighting or failing to turn a light on is sometimes a factor and may be coupled with visits to the toilet during the night. (4%)
- Poor eyesight makes a contribution, often coupled with one of the other factors. (3%)

5. When falls happen

Figure 7 shows the month-by-month change in the number of fatal and non-fatal falls on stairs or steps. The non-fatal injuries occur at a fairly constant rate throughout the year while the fatal injuries show a definite reduction during the summer months.

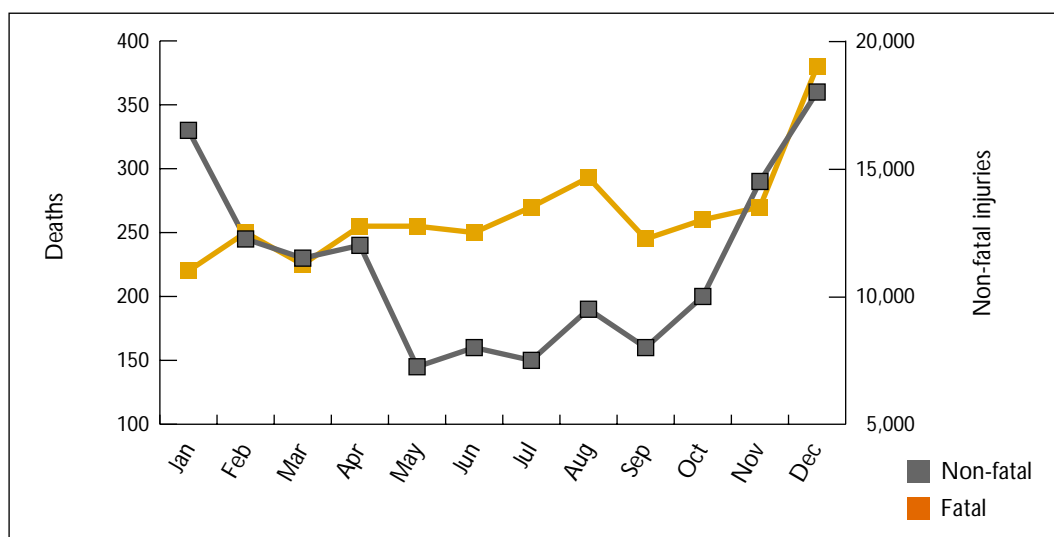


FIGURE 7 When falls happen on stairs or steps in the home – 1996 to 1998

6. Regional information

The data on deaths from falls include information on the district where the accidents happened. Tables 4 and 5 list the number of fatalities in each county and district* over the three years 1996 to 1998. Table 4 shows figures for each county in England, plus figures for Wales, Scotland and Northern Ireland for falls on stairs and steps and also gives figures for all falls.

Table 5 shows the figures for stairs and steps for individual districts. The districts in England are grouped by county for ease of reference followed by single groups for Wales, Scotland and Northern Ireland.

Tables 4 and 5 also include estimates of the number of serious and minor falls over the same period. These estimates are based on the national accident rates and the population and age distribution in each district.

* The districts for England and Wales are based on the county districts or unitary authorities as defined after the local government changes implemented in 1999. Where recent changes have been made in boundaries, earlier cases have been reallocated to the newly defined areas.

The districts in England are grouped by county. The counties selected here are not necessarily administrative areas but have been chosen to facilitate finding a particular district. For example Bristol is listed under Gloucestershire. All the districts in Wales are grouped together.

The districts in Scotland are the health board areas and are grouped together under a single heading. All figures for Northern Ireland are given under a single heading.

Table 1: Falls on stairs or steps in the home – 1996 to1998

Age band	Under 15	14 – 39	40 – 64	65 – 74	75 – 84	85+	
Deaths							
Men	9	282	683	399	568	293	2,234
Women	0	127	355	372	578	445	1,877
Total Deaths	9	409	1,03	8771	1,146	738	4,111
		35%		65%			
Very serious injuries							
Men	900	1,800	3,600	2,700	3,800	1,800	14,600
Women	700	2,700	8,200	7,200	11,800	6,900	37,500
Total Very Serious Injuries	1,600	4,500	11,800	9,900	15,600	8,700	52,100
		34%		66%			
Serious (inc. very serious) injuries							
Men	21,000	21,800	17,900	6,000	6,800	2,600	76,100
Women	21,700	29,500	33,800	17,400	19,600	9,400	131,400
Total Serious Injuries	42,700	51,300	51,700	23,400	26,400	12,000	207,500
		71%		29%			

Source: Metra Martech Analysis

Table 2: Falls on stairs or steps in the home – 1996 to1998 – per million people in age band per year

Age band	Under 15	14 – 39	40 – 64	65 – 74	75 – 84	85+	
Deaths							
Men	1	9	26	59	164	367	13
Women	0	8	14	46	102	191	21
Very serious injuries							
Men	50	60	140	400	1,000	2,100	170
Women	40	90	300	900	2,000	2,800	420
Serious (inc. very serious) injuries							
Men	1,200	700	700	900	1,900	3,000	900
Women	1,300	1,000	1,300	2,100	3,300	3,900	1,500

Source: Metra Martech Analysis

Table 3: Location of non-fatal falls on stairs or steps in the home – 1996 to1998

Age band	65 – 74	75 – 84	85+	Total of 65
Location				
Stairs	65%	59%	61%	62%
Inside Steps	15%	17%	21%	17%
Doorstep	13%	14%	10%	13%
Outside Steps	6%	8%	7%	7%
Stepladder	1%	2%	1%	1%
Percentage of Serious Injuries				
Stairs	32%	40%	49%	38%
Inside Steps	27%	35%	38%	33%
Doorstep	27%	33%	40%	31%
Outside Steps	23%	36%	27%	30%
Stepladder	30%	31%	50%	32%
	30%	38%	44%	36%

Source: Metra Martech Analysis

Table 4: Falls in the home – deaths and non-fatal injuries involving the over-65s – totals from 1996 to 1998 – by county or country

	Falls on stairs and steps			Non stair falls			All falls		
	Fatal	Serious	Minor	Fatal	Serious	Minor	Fatal	Serious	Minor
Bedfordshire	16	471	798	8	2,232	2,824	24	2,703	3,622
Berkshire	21	660	1,119	12	3,128	3,961	33	3,788	5,080
Buckinghamshire	21	498	846	7	2,673	3,398	28	3,171	4,244
Cambridgeshire	18	675	1,146	5	3,199	4,056	23	3,874	5,202
Cheshire	53	1,008	1,701	7	4,777	6,021	60	5,785	7,722
Cornwall	30	570	963	9	3,128	3,940	39	3,698	4,903
Cumbria	35	594	1,005	30	2,815	3,557	65	3,409	4,562
Derbyshire	70	1,056	1,782	41	5,005	6,308	111	6,061	8,090
Devon	43	1,272	2,124	56	7,024	8,740	99	8,296	10,864
Dorset	14	999	1,662	14	5,033	6,255	28	6,032	7,917
Durham	28	660	1,116	18	3,526	4,460	46	4,186	5,576
Essex	57	1,698	2,850	36	8,389	10,535	93	10,087	13,385
Gloucestershire	51	1,299	2,184	22	6,157	7,731	73	7,456	9,915
Greater London	248	6,384	10,686	92	30,288	37,870	340	36,672	48,556
Greater Manchester	148	2,595	4,359	22	12,300	15,430	170	14,895	19,789
Hampshire	56	1,827	3,072	17	9,143	11,490	73	10,970	14,562
Hereford & Worcester	40	792	1,341	64	3,754	4,747	104	4,546	6,088
Hertfordshire	41	1,020	1,725	35	4,834	6,106	76	5,854	7,831
Kent	92	1,779	2,979	63	8,432	10,545	155	10,211	13,524
Lancashire	96	1,617	2,712	17	7,664	9,600	113	9,281	12,312
Leicestershire	34	924	1,560	55	4,379	5,522	89	5,303	7,082
Lincolnshire	30	1,116	1,893	13	5,289	6,701	43	6,405	8,594
Merseyside	59	1,551	2,619	10	7,351	9,271	69	8,902	11,890
Norfolk	19	1,035	1,743	28	4,905	6,170	47	5,940	7,913
Northamptonshire	25	585	993	5	2,772	3,515	30	3,357	4,508
Northumberland	9	309	525	22	1,649	2,092	31	1,958	2,617
Nottinghamshire	62	1,089	1,845	5	5,161	6,531	67	6,250	8,376
Oxfordshire	15	567	963	6	2,687	3,409	21	3,254	4,372
Shropshire	24	384	651	5	2,147	2,718	29	2,531	3,369
Somerset	32	1,044	1,746	3	5,247	6,541	35	6,291	8,287
Staffordshire	60	1,065	1,815	99	5,048	6,425	159	6,113	8,240
Suffolk	30	744	1,251	17	3,782	4,747	47	4,526	5,998
Surrey	19	1,080	1,824	17	5,517	6,945	36	6,597	8,769
Sussex – East	32	1,134	1,863	5	5,375	6,595	37	6,509	8,458
Sussex – West	34	1,065	1,770	14	5,048	6,265	48	6,113	8,035
Tyne and Wear	46	1,227	2,088	20	5,815	7,391	66	7,042	9,479
Warwickshire	30	531	897	22	2,516	3,175	52	3,047	4,072
West Midlands	181	2,730	4,611	137	12,940	16,322	318	15,670	20,933
Wiltshire	15	621	1,047	18	2,943	3,706	33	3,564	4,753
Yorkshire – East Riding	14	636	1,077	4	3,014	3,812	18	3,650	4,889
Yorkshire – North	73	1,302	2,199	30	6,399	8,071	103	7,701	10,270
Yorkshire – South	62	1,401	2,367	43	6,640	8,379	105	8,041	10,746
Yorkshire – West	132	2,142	3,600	49	10,153	12,744	181	12,295	16,344
Wales	200	3,423	5,793	256	16,225	20,507	456	19,648	26,300
Scotland	195	5,247	8,916	184	24,870	31,562	379	30,117	40,478
Northern Ireland	46	1,416	2,412	10	6,711	8,538	56	8,127	10,950
Total	2,656	61,842	104,238	1,652	298,084	375,228	4,308	359,926	479,466

Table 5: Falls on stairs or steps in the home – deaths and non-fatal injuries involving the over-65s – totals from 1996 to 1998 – by district

	Total cases 96-98				Total cases 96-98		
	Fatal	Serious	Minor		Fatal	Serious	Minor
Bedfordshire				Devon			
Bedford	7	138	231	East Devon	6	237	393
Luton	5	135	231	Exeter	6	123	207
Mid Bedfordshire	0	102	174	Mid Devon	2	84	141
South Bedfordshire	4	96	162	North Devon	8	123	204
Total	16	471	798	Plymouth	3	273	459
				South Hams	2	111	186
Berkshire				Teignbridge	2	180	297
Bracknell Forest	3	78	132	Torrige	4	75	126
Reading	8	132	219	West Devon	10	66	111
Slough	0	84	144	Total	43	1,272	2,124
West Berkshire	6	123	210				
Windsor and Maidenhead	2	138	234	Dorset			
Wokingham	2	105	180	Bournemouth	2	264	432
Total	21	660	1,119	Christchurch	0	93	156
				East Dorset	0	138	234
Buckinghamshire				North Dorset	2	81	135
Aylesbury Vale	6	126	216	Poole	2	192	321
Chiltern	6	102	168	West Dorset	6	153	255
Milton Keynes	2	132	225	Weymouth and Portland	2	78	129
Wycombe	7	138	237	Total	14	999	1,662
Total	21	498	846				
				Durham			
Cambridgeshire				Darlington	10	114	192
Cambridge	2	114	189	Derwentside	5	99	165
East Cambridgeshire	0	72	126	Durham	1	87	147
Fenland	2	99	168	Easington	2	96	165
Huntingdonshire	4	126	213	Hartlepool	0	93	159
Peterborough	9	138	237	Sedgefield	2	93	159
South Cambridgeshire	1	126	213	Wear Valley	8	78	129
Total	18	675	1,146	Total	28	660	1,116
Cheshire				Essex			
Chester	10	138	231	Basildon	0	159	270
Congleton	5	96	159	Braintree	9	129	216
Crewe and Nantwich	2	114	192	Brentwood	0	78	132
Ellesmere Port and Neston	2	81	138	Castle Point	0	87	150
Halton	4	102	174	Chelmsford	11	150	252
Macclesfield	12	177	300	Colchester	2	153	258
Vale Royal	4	123	207	Epping Forest	2	135	225
Warrington	14	177	300	Maldon	8	60	99
Total	53	1,008	1,701	Rochford	4	87	150
				Southend-on-Sea	11	234	384
Cornwall				Tendring	4	246	408
Caradon	2	102	171	Thurrock	3	111	192
Carrick	7	129	216	Uttlesford	3	69	114
Kerrier	3	117	198	Total	57	1,698	2,850
North Cornwall	6	105	180				
Restormel	12	117	198	Gloucestershire			
Total	30	570	963	Bristol	20	432	720
				Cheltenham	6	135	225
Cumbria				Cotswold	5	105	180
Allerdale	5	117	198	Forest of Dean	4	90	150
Barrow-in-Furness	6	75	129	Gloucester	3	105	177
Carlisle	11	123	207	South Gloucestershire	5	213	366
Carlisle	11	123	207	Stroud	5	129	216
Copeland	0	72	120	Tewkesbury	3	90	150
Eden	4	60	102	Total	51	1,299	2,184
South Lakeland	9	147	249				
Total	35	594	1,005				
Derbyshire							
Amber Valley	10	135	225				
Bolsover	7	81	138				
Chesterfield	4	114	192				
Derby	12	249	420				
Derbyshire Dales	4	90	150				
Erewash	12	117	195				
High Peak	4	87	147				
North East Derbyshire	15	111	189				
South Derbyshire	2	72	126				
Total	70	1,056	1,782				

	Total cases 96-98				Total cases 96-98		
	Fatal	Serious	Minor		Fatal	Serious	Minor
Greater London				Hertfordshire			
Barking and Dagenham	8	171	288	Broxbourne	0	75	129
Barnet	13	321	534	Dacorum	3	135	228
Bexley	5	225	378	East Hertfordshire	0	111	186
Brent	22	177	306	Hertsmere	9	111	183
Bromley	13	351	585	North Hertfordshire	0	126	213
Camden	2	168	279	St Albans	5	129	219
Croydon	8	291	489	Stevenage	0	63	111
Ealing	15	237	396	Three Rivers	17	99	165
Enfield	11	267	441	Watford	7	66	111
Greenwich	7	204	339	Welwyn Hatfield	0	105	180
Hackney	2	135	228	Total	41	1,020	1,725
Hammersmith and Fulham	5	120	201	Kent			
Haringey	8	156	261	Ashford	4	108	183
Harrow	9	207	342	Canterbury	22	198	330
Havering	10	255	435	Dartford	6	78	135
Hillingdon	5	237	399	Dover	9	144	237
Hounslow	8	177	297	Gravesham	0	93	159
Islington	2	138	234	Maidstone	3	144	240
Kensington and Chelsea	3	132	219	Medway Towns	4	201	342
Kingston-upon-Thames	4	144	240	Sevenoaks	7	123	207
Lambeth	11	192	324	Shepway	13	141	231
Lewisham	12	213	357	Swale	0	120	204
Merton	12	171	282	Thanet	19	204	339
Newham	7	156	264	Tonbridge and Malling	1	102	171
Redbridge	5	234	387	Tunbridge Wells	4	123	201
Richmond-upon-Thames	9	192	315	Total	92	1,779	2,979
Southwark	8	186	318	Lancashire			
Sutton	6	186	309	Blackburn with Darwen	12	129	219
Tower Hamlets	0	135	228	Blackpool	11	201	339
Waltham Forest	4	198	327	Burnley	7	96	159
Wandsworth	6	225	375	Chorley	6	96	159
Westminster City of	8	183	309	Fylde	2	123	201
Total	248	6,384	10,686	Hyndburn	8	84	141
Greater Manchester				Lancaster	15	171	282
Bolton	2	270	453	Pendle	8	87	150
Bury	4	180	303	Preston	9	135	225
Manchester	57	399	666	Ribble Valley	4	60	105
Oldham	12	216	360	Rosendale	3	66	111
Rochdale	10	198	336	South Ribble	5	102	174
Salford	18	255	423	West Lancashire	2	111	186
Stockport	16	324	546	Wyre	4	156	261
Tameside	3	222	375	Total	96	1,617	2,712
Trafford	19	237	399	Leicestershire			
Wigan	7	294	498	Blaby	0	78	132
Total	148	2,595	4,359	Charnwood	18	159	267
Hampshire				Harborough	4	75	126
Basingstoke and Deane	3	117	201	Hinckley and Bosworth	0	105	177
East Hampshire	3	111	189	Leicester	0	279	471
Fareham	3	120	201	Melton	0	48	81
Gosport	3	78	132	North West Leicestershire	8	87	150
Hart	6	66	111	Oadby and Wigston	0	57	96
Havant	2	141	240	Rutland	4	36	60
Isle of Wight	8	204	339	Total	34	924	1,560
New Forest	2	252	423	Lincolnshire			
Portsmouth	3	210	348	Boston	0	72	120
Rushmoor	1	69	114	East Lindsey	0	186	318
Southampton	9	228	384	Lincoln	3	93	156
Test Valley	5	105	177	North East Lincolnshire	5	174	294
Winchester	8	126	213	North Kesteven	3	111	186
Total	56	1,827	3,072	North Lincolnshire	3	165	282
Hereford & Worcester				South Holland	3	96	165
Bromsgrove	11	96	165	South Kesteven	9	129	219
Hereford	5	186	312	West Lindsey	4	90	153
Malvern Hills	0	126	213	Total	30	1,116	1,893
Redditch	0	63	108				
Worcester	9	93	156				
Wychavon	4	126	216				
Wyre Forest	11	102	171				
Total	40	792	1,341				

	Total cases 96-98				Total cases 96-98		
	Fatal	Serious	Minor		Fatal	Serious	Minor
Merseyside				Staffordshire			
Knowsley	10	132	231	Cannock Chase	0	75	129
Liverpool	20	465	783	East Staffordshire	0	108	183
Sefton	13	375	630	Lichfield	0	90	153
St Helens	10	180	306	Newcastle-under-Lyme	8	138	237
Wirral	6	399	669	South Staffordshire	0	102	174
Total	59	1,551	2,619	Stafford	4	132	225
Norfolk				Staffordshire Moorlands	19	102	174
Breckland	3	150	252	Stoke-on-Trent	29	270	456
Broadland	0	138	234	Tamworth	0	48	84
Great Yarmouth	3	120	201	Total	60	1,065	1,815
Kings Lynn and West Norfolk	8	183	309	Suffolk			
North Norfolk	3	162	273	Babergh	2	96	162
Norwich	2	147	246	Ipswich	9	135	225
South Norfolk	0	135	228	Mid Suffolk	0	99	168
Total	19	1,035	1,743	St Edmundsbury	3	102	174
Northamptonshire				Suffolk Coastal	6	153	255
Corby	7	45	81	Waveney	10	159	267
Daventry	3	60	105	Total	30	744	1,251
East Northamptonshire	4	75	126	Surrey			
Kettering	0	84	141	Elmbridge	3	135	228
Northampton	6	180	300	Guildford	2	135	228
South Northamptonshire	1	72	120	Mole Valley	0	105	177
Wellingborough	4	69	120	Reigate and Banstead	1	135	228
Total	25	585	993	Runnymede	1	87	147
Northumberland				Spelthorne	3	99	168
Alnwick	3	39	69	Surrey Heath	2	66	114
Blyth Valley	0	72	120	Tandridge	1	90	153
Castle Morpeth	0	60	102	Waverley	4	144	240
Tynedale	6	69	117	Woking	2	84	141
Wansbeck	0	69	117	Total	19	1,080	1,824
Total	9	309	525	Sussex – East			
Nottinghamshire				Brighton & Hove	5	318	525
Ashfield	10	117	198	Eastbourne	7	171	279
Bassetlaw	0	111	189	Hastings	3	117	189
Broxtowe	6	117	198	Lewes	4	144	237
Gedling	7	123	207	Rother	0	186	303
Mansfield	8	105	177	Wealden	13	198	330
Newark and Sherwood	2	114	195	Total	32	1,134	1,863
Nottingham	23	288	486	Sussex – West			
Rushcliffe	6	114	195	Adur	3	90	150
Total	62	1,089	1,845	Arun	12	264	435
Oxfordshire				Chichester	8	171	285
Cherwell	6	108	186	Crawley	1	84	147
Oxford	3	129	213	Horsham	5	135	225
South Oxfordshire	0	123	210	Mid Sussex	3	138	231
Vale of White Horse	0	111	189	Worthing	2	183	297
West Oxfordshire	6	96	165	Total	34	1,065	1,770
Total	15	567	963	Tyne and Wear			
Shropshire				Gateshead	10	219	375
Bridgnorth	2	54	93	Newcastle-upon-Tyne	9	297	501
Oswestry	2	45	72	North Tyneside	20	240	405
Shrewsbury and Atcham	6	111	189	South Tyneside	4	183	312
South Shropshire	5	57	96	Sunderland	3	288	495
Telford and Wrekin	9	117	201	Total	46	1,227	2,088
Total	24	384	651	Warwickshire			
Somerset				North Warwickshire	3	60	99
Bath and North East Somerset	13	213	357	Nuneaton and Bedworth	9	108	186
Mendip	4	114	192	Rugby	1	93	156
North Somerset	4	249	414	Stratford-on-Avon	4	132	222
Sedgemoor	3	135	225	Warwick	13	138	234
South Somerset	6	201	336	Total	30	531	897
Taunton Deane	2	132	222				
Total	32	1,044	1,746				

	Total cases 96–98				Total cases 96–98		
	Fatal	Serious	Minor		Fatal	Serious	Minor
West Midlands				Wales			
Birmingham	89	1,008	1,695	Blaenau Gwent	8	84	141
Coventry	9	324	543	Bridgend	5	147	249
Dudley	21	333	564	Caerphilly	8	168	285
Sandwell	18	318	537	Cardiff	32	324	543
Solihull	8	213	363	Carmarthenshire	14	231	390
Walsall	25	270	459	Ceredigion	4	90	153
Wolverhampton	11	264	450	Conwy	13	186	309
Total	181	2,730	4,611	Denbighshire	9	132	222
Wiltshire				Flintshire	2	144	246
Kennet	2	81	138	Gwynedd	9	156	261
North Wiltshire	3	120	201	Isle of Anglesey	6	84	14
Salisbury	2	135	225	Merthyr Tydfil	2	63	105
Swindon	8	159	270	Monmouthshire	4	102	174
West Wiltshire	0	126	213	Neath, Port Talbot	8	174	294
Total	15	621	1,047	Newport	10	147	252
Yorkshire – East Riding				Pembrokeshire	1	135	231
East Riding of Yorkshire	7	366	621	Powys	8	159	273
Kingston-upon-Hull	7	270	456	Rhondda, Cynon, Taff	21	252	429
Total	14	636	1,077	Swansea	17	279	471
Yorkshire – North				The Vale of Glamorgan	8	132	225
Craven	7	72	123	Torfaen	4	96	162
Hambleton	5	93	159	Wrexham	7	138	234
Harrogate	3	180	297	Total	200	3,423	5,793
Middlesbrough	8	138	234	Scotland			
Redcar and Cleveland	11	147	249	Argyll and Clyde	31	441	750
Ryedale	4	72	120	Ayr and Arran	6	411	696
Scarborough	11	162	270	Borders	4	135	228
Selby	2	72	123	Dumfries and Galloway	9	177	306
Stockton-on-Tees	13	162	279	Fife	28	369	627
York	9	204	345	Forth Valley	4	273	465
Total	73	1,302	2,199	Grampian	10	504	855
Yorkshire – South				Greater Glasgow	24	936	1,584
Barnsley	5	240	408	Highland	8	216	369
Doncaster	15	297	510	Lanark	10	492	846
Rotherham	5	258	438	Lothian	48	756	1,281
Sheffield	37	606	1,011	Orkney	0	21	36
Total	62	1,401	2,367	Shetland	0	21	33
Yorkshire – West				Tayside	10	459	780
Bradford	44	474	795	Western Isles	3	36	60
Calderdale	8	207	348	Total	195	5,247	8,916
Kirklees	25	396	663	Northern Ireland			
Leeds	49	756	1,272	Northern Ireland	46	1,416	2,412
Wakefield	6	309	522	Total	46	1,416	2,412
Total	132	2,142	3,600				



ISBN 0 7521 1919 2



Designed by Persona Grata